

# DecoLine



# Sharazade



**Preparazione ...** SHARAZADE viene prodotto in due versioni base: SILVER "LIGHT" e SILVER "PLUS". Le tinte a catalogo si ottengono mediante l'aggiunta di toner alle basi SILVER "LIGHT" o "PLUS", in quantità variabile a seconda dell'intensità di colore desiderata. Aggiungere il toner direttamente nella confezione di SHARAZADE BASE e mescolare con una spatola fino a completa omogeneità.

I colori della **serie "D"** si ottengono aggiungendo 1/4 di toner allo SHARAZADE BASE SILVER "LIGHT" o "PLUS".

I colori della **serie "C"** si ottengono aggiungendo 1/2 toner allo SHARAZADE BASE SILVER "LIGHT" o "PLUS".

I colori della **serie "B"** si ottengono aggiungendo 1 toner allo SHARAZADE BASE SILVER "LIGHT" o "PLUS".

I colori della **serie "A"** si ottengono aggiungendo 2 toner allo SHARAZADE BASE SILVER "LIGHT" o "PLUS".

**Preparation ...** SHARAZADE is produced by using one of the two base versions, either SILVER "LIGHT" or SILVER "PLUS", along with the addition of a tinting toner. The colours in this brochure are obtained by adding the toner in variable quantities depending on the intensity of the colour desired. The toner is added directly into the SHARAZADE base and then the paint should be stirred carefully until completely mixed.

The colors of the **"D"** series are obtained by adding 1/4 toner to the SHARAZADE SILVER BASE "LIGHT" or "PLUS".

The colors of the **"C"** series are obtained by adding 1/2 toner to the SHARAZADE SILVER BASE "LIGHT" or "PLUS".

The colors of the **"B"** series are obtained by adding 1 toner to the SHARAZADE SILVER BASE "LIGHT" or "PLUS".

The colors of the **"A"** series are obtained by adding 2 toners to the SHARAZADE SILVER BASE "LIGHT" or "PLUS".



2,5 l. (~ 15 m<sup>2</sup>)

Confezione - Packaging  
Conditionnement - Упаковка

100 ml.

Toner  
Тонер



**DecoLine**

Sharazade base **SILVER "Plus"**

**Applicazione...** SHARAZADE si applica su supporti portanti, puliti e asciutti (intonaci nuovi e rappezzi maturati per almeno 3-4 settimane) eventualmente preparati con fissativo all'acqua ISOFARB ACR-2, indispensabile su superfici particolarmente assorbenti, pitturate a tempera, rasature in gesso, cartongesso.

- 1 Stendere a rullo uno o due mani di FONDO VEICOT.
- 2-3 A superficie asciutta, intingere il pennello direttamente nella confezione SHARAZADE e applicare sulla parete con pennellate corte e incrociate, avendo cura di ricoprire tutta la superficie.
- 4 Dopo l'inizio dell'essiccazione (tra i 3 e i 10 min.), effettuare la finitura ripassando con il pennello asciutto esercitando una leggera pressione per eliminare tracce di giunte e rigature. Applicare 1 o 2 mani a seconda dell'effetto finale desiderato.

**Application...** apply SHARAZADE on sound, clean and dry surfaces. Extremely porous surfaces should receive a primer coat of sealer as pre-treatment (ISOFARB ACR-2).

- 1 Apply 1-2 coats by roller of FONDO VEICOT.
- 2-3 When the surface is dry, dip the Spalter directly into the product and apply on the wall in a random criss-cross pattern, avoiding net squaring effects.
- 4 As SHARAZADE begins to dry (3÷10 minutes), proceed to rubbing down with the dry Spalter, exerting a light pressure, to remove brush scratches. Apply one or two coats depending on the desired final effect.

**Préparation ...** SHARAZADE est produite dans deux versions de base SILVER "LIGHT" et SILVER "PLUS". Les couleurs du catalogue sont obtenues en ajoutant du toner dans les bases SILVER "LIGHT" ou "PLUS", en quantités variables selon l'intensité de la couleur recherchée. Ajouter le toner directement dans l'emballage de SHARAZADE BASE et mélanger avec une spatule, jusqu'à homogénéité complète.

Les couleurs de la série «D» sont obtenues en ajoutant 1/4 de toner au SHARAZADE SILVER BASE "LIGHT" ou "PLUS".

Les couleurs de la série «C» sont obtenues en ajoutant 1/2 toner au SHARAZADE SILVER BASE "LIGHT" ou "PLUS".

Les couleurs de la série «B» sont obtenues en ajoutant 1 toner au SHARAZADE SILVER BASE "LIGHT" ou "PLUS".

Les couleurs de la série «A» sont obtenues en ajoutant 2 toners au SHARAZADE SILVER BASE "LIGHT" ou "PLUS".

**ТЕХНОЛОГИЯ НАНЕСЕНИЯ ...** SHARAZADE производится в следующих базисах: SILVER LIGHT и SILVER PLUS. Цвета, представленные в каталоге, получены с помощью смешивания тонера и базиса SILVER LIGHT или SILVER PLUS. Нужное количество тонера зависит от того, какая насыщенность цвета требуется. Добавьте тонер непосредственно в упаковку базиса SHARAZADE, перемешайте шпателем до полной однородности.

Для получения цвета серии D необходимо смешать 1/4 тонера с базисом SHARAZADE SILVER LIGHT или SHARAZADE SILVER PLUS.

Для получения цвета серии C необходимо смешать 1/2 тонера с базисом SHARAZADE SILVER LIGHT или SHARAZADE SILVER PLUS.

Для получения цвета серии B необходимо смешать 1 тонер с базисом SHARAZADE SILVER LIGHT или SHARAZADE SILVER PLUS.

Для получения цвета серии A необходимо смешать 2 тонера с базисом SHARAZADE SILVER LIGHT или SHARAZADE SILVER PLUS.

6 ÷ 8 m<sup>2</sup>/l.

Resa - Yield  
Rendement - Расход л/м

H<sub>2</sub>O ~ 30 °C

Pulizia attrezzi - Tools cleaning  
Nettoyage des outils - Чистящие Средства

3



4



Sharazade

Sharazade base **SILVER "Light"**

**Application...** SHARAZADE s'applique sur supports cohérents, propres et secs (enduits neufs et rapiéçages datant d'au moins 3-4 semaines), préparés avec un fixateur de fond à l'eau (ISOFARB ACR-2) si nécessaire, essentiels sur des surfaces particulièrement absorbantes.

- 1 Appliquer une-deux couches de FONDO VEICOT blanc.
- 2-3 Avec la brosette, déposer le produit en tous sens ; SHARAZADE c'est prêt à l'emploi. Pour éviter les traces de raccord, appliquer sans faire d'arrêts linéaires mais plutôt irréguliers.
- 4 Quand SHARAZADE commence à sécher (3 à 10 minutes), lisser délicatement en tous sens avec la brosette sèche, en exerçant une légère pression, pour enlever les rayures et les jonctions. Appliquer une ou deux couches selon l'effet finale qu'on veut obtenir.

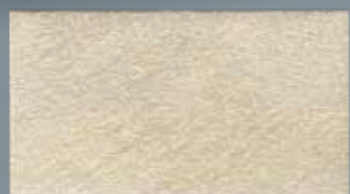
**НАНЕСЕНИЕ...** SHARAZADE наносится на чистые и сухие поверхности, заранее подготовленные с помощью штукатурки или шпаклевки, и выдержанные в течение 3-4 недель. Для поверхностей с высоким уровнем впитывания, шпаклеванных поверхностей и поверхностей из гипсокартона рекомендуется использовать фиксатор ISOFARB ACR-2.

- 1 Нанесите с помощью валика один или два слоя грунта VEICOT.
- 2-3 Когда поверхность высохнет, обмакните кисть непосредственно в упаковку и нанесите SHARAZADE короткими и перекрестными мазками, покрывая всю поверхность.
- 4 Когда SHARAZADE начнет высыхать (через 3-5 мин.), произведите растушевку сухой щеткой с легким нажатием, удаляя следы неровностей и стыков. Нанесите в один или два слоя в зависимости от выбранного эффекта.

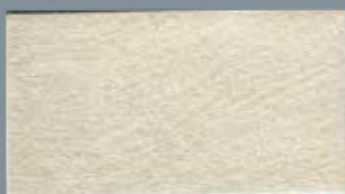
# Sharazade

Cod. Sharazade Base Toner n. xx  
SHA xx A 1 (2,5 l.) 2 (200 ml)

Cod. Sharazade Base Toner n. xx  
SHA xx B 1 (2,5 l.) 1 (100 ml)



SHA 01 A 2,5l. + 2 Toner 01



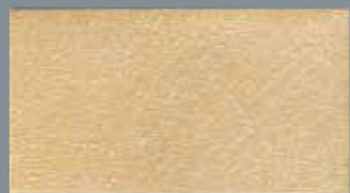
SHA 01 B 2,5l. + 1 Toner 01



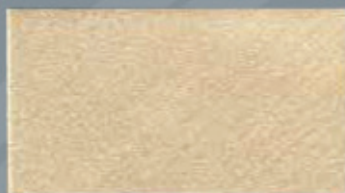
SHA 01 C 2,5l. + 1/2 Toner 01



SHA 01 D 2,5l. + 1/4 Toner 01



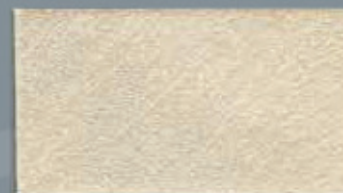
SHA 02 A 2,5l. + 2 Toner 02



SHA 02 B 2,5l. + 1 Toner 02



SHA 02 C 2,5l. + 1/2 Toner 02



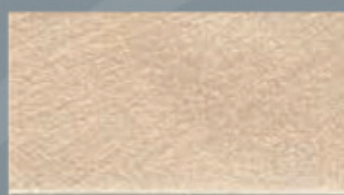
SHA 02 D 2,5l. + 1/4 Toner 02



SHA 03 A 2,5l. + 2 Toner 03



SHA 03 B 2,5l. + 1 Toner 03



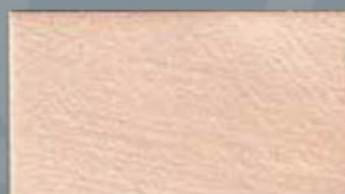
SHA 03 C 2,5l. + 1/2 Toner 03



SHA 03 D 2,5l. + 1/4 Toner 03



SHA 06 A 2,5l. + 2 Toner 06



SHA 06 B 2,5l. + 1 Toner 06



SHA 06 C 2,5l. + 1/2 Toner 06



SHA 06 D 2,5l. + 1/4 Toner 06



SHA 07 A 2,5l. + 2 Toner 07



SHA 07 B 2,5l. + 1 Toner 07



SHA 07 C 2,5l. + 1/2 Toner 07



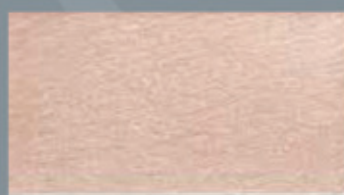
SHA 07 D 2,5l. + 1/4 Toner 07



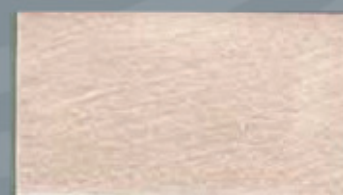
SHA 35 A 2,5l. + 2 Toner 35



SHA 35 B 2,5l. + 1 Toner 35



SHA 35 C 2,5l. + 1/2 Toner 35



SHA 35 D 2,5l. + 1/4 Toner 35



SHA 04 A 2,5l. + 2 Toner 04



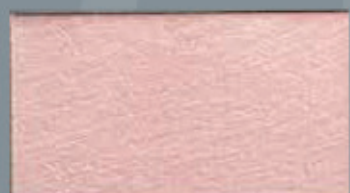
SHA 04 B 2,5l. + 1 Toner 04



SHA 04 C 2,5l. + 1/2 Toner 04



SHA 04 D 2,5l. + 1/4 Toner 04



SHA 05 A 2,5l. + 2 Toner 05



SHA 05 B 2,5l. + 1 Toner 05



SHA 05 C 2,5l. + 1/2 Toner 05

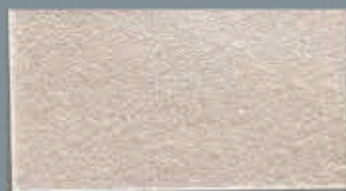


SHA 05 D 2,5l. + 1/4 Toner 05

Cod.	Sharazade Base	Toner n. xx	Cod.	Sharazade Base	Toner n. xx
<b>SHA xx C</b>	<b>1 (2,5 l.)</b>	<b>1/2 (50 ml)</b>	<b>SHA xx D</b>	<b>1 (2,5 l.)</b>	<b>1/4 (25 ml)</b>



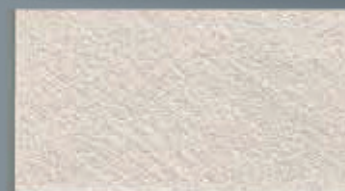
SHA 08 A 2,5l. + 2 Toner 08



SHA 08 B 2,5l. + 1 Toner 08



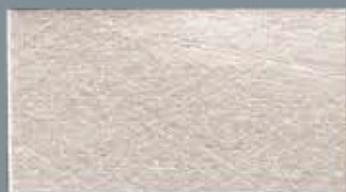
SHA 08 C 2,5l. + 1/2 Toner 08



SHA 08 D 2,5l. + 1/4 Toner 08



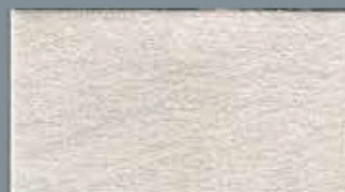
SHA 10 A 2,5l. + 2 Toner 10



SHA 10 B 2,5l. + 1 Toner 10



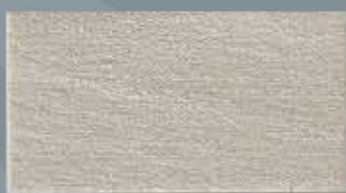
SHA 10 C 2,5l. + 1/2 Toner 10



SHA 10 D 2,5l. + 1/4 Toner 10



SHA 18 A 2,5l. + 2 Toner 18



SHA 18 B 2,5l. + 1 Toner 18



SHA 18 C 2,5l. + 1/2 Toner 18



SHA 18 D 2,5l. + 1/4 Toner 18



SHA 20 A 2,5l. + 2 Toner 20



SHA 20 B 2,5l. + 1 Toner 20



SHA 20 C 2,5l. + 1/2 Toner 20



SHA 20 D 2,5l. + 1/4 Toner 20



SHA 23 A 2,5l. + 2 Toner 23



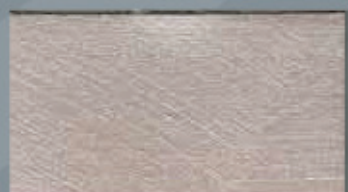
SHA 23 B 2,5l. + 1 Toner 23



SHA 23 C 2,5l. + 1/2 Toner 23



SHA 23 D 2,5l. + 1/4 Toner 23



SHA 36 A 2,5l. + 2 Toner 36



SHA 36 B 2,5l. + 1 Toner 36



SHA 36 C 2,5l. + 1/2 Toner 36



SHA 36 D 2,5l. + 1/4 Toner 36



SHA 17 A 2,5l. + 2 Toner 17



SHA 17 B 2,5l. + 1 Toner 17



SHA 17 C 2,5l. + 1/2 Toner 17



SHA 17 D 2,5l. + 1/4 Toner 17



SHA 37 A 2,5l. + 2 Toner 37



SHA 37 B 2,5l. + 1 Toner 37



SHA 37 C 2,5l. + 1/2 Toner 37



SHA 37 D 2,5l. + 1/4 Toner 37

*Esempio - For example - Par exemple - Например*

**SHA 05 D = 1** Sharazade Base + 1/4 Toner n. 05

**SHA 05 B = 1** Sharazade Base + 1 Toner n. 05



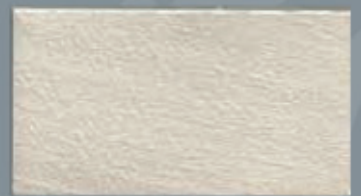
SHA 09 A 2,5l. + 2 Toner 09



SHA 09 B 2,5l. + 1 Toner 09



SHA 09 C 2,5l. + 1/2 Toner 09



SHA 09 D 2,5l. + 1/4 Toner 09



SHA 22 A 2,5l. + 2 Toner 22



SHA 22 B 2,5l. + 1 Toner 22



SHA 22 C 2,5l. + 1/2 Toner 22



SHA 22 D 2,5l. + 1/4 Toner 22



SHA 11 A 2,5l. + 2 Toner 11



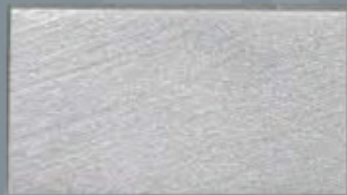
SHA 11 B 2,5l. + 1 Toner 11



SHA 11 C 2,5l. + 1/2 Toner 11



SHA 11 D 2,5l. + 1/4 Toner 11



SHA 34 A 2,5l. + 2 Toner 34



SHA 34 B 2,5l. + 1 Toner 34



SHA 34 C 2,5l. + 1/2 Toner 34



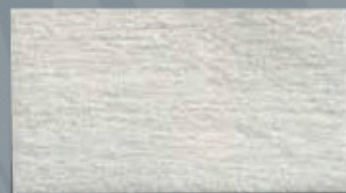
SHA 34 D 2,5l. + 1/4 Toner 34



SHA 16 A 2,5l. + 2 Toner 16



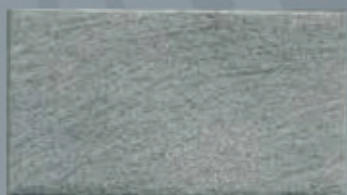
SHA 16 B 2,5l. + 1 Toner 16



SHA 16 C 2,5l. + 1/2 Toner 16



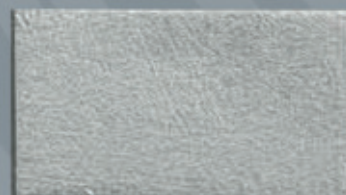
SHA 16 D 2,5l. + 1/4 Toner 16



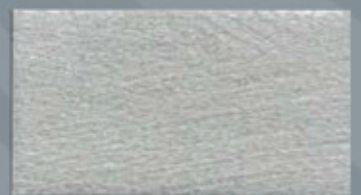
SHA 43 A 2,5l. + 2 Toner 43



SHA 43 B 2,5l. + 1 Toner 43



SHA 43 C 2,5l. + 1/2 Toner 43



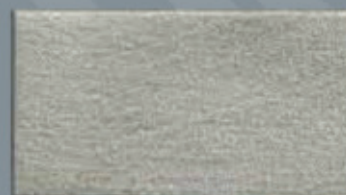
SHA 43 D 2,5l. + 1/4 Toner 43



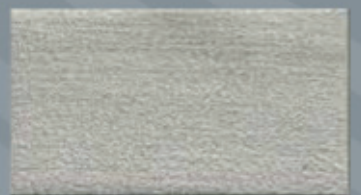
SHA 24 A 2,5l. + 2 Toner 24



SHA 24 B 2,5l. + 1 Toner 24



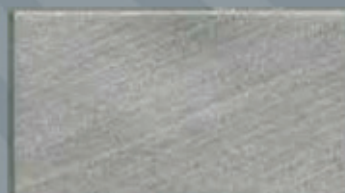
SHA 24 C 2,5l. + 1/2 Toner 24



SHA 24 D 2,5l. + 1/4 Toner 24



SHA 33 A 2,5l. + 2 Toner 33



SHA 33 B 2,5l. + 1 Toner 33



SHA 33 C 2,5l. + 1/2 Toner 33



SHA 33 D 2,5l. + 1/4 Toner 33



SHA 31 A 2,5l. + 2 Toner 31



SHA 31 B 2,5l. + 1 Toner 31



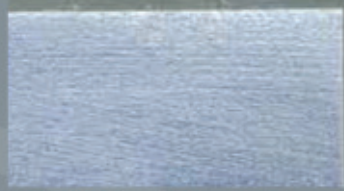
SHA 31 C 2,5l. + 1/2 Toner 31



SHA 31 D 2,5l. + 1/4 Toner 31



SHA 44 A 2,5l. + 2 Toner 44



SHA 44 B 2,5l. + 1 Toner 44



SHA 44 C 2,5l. + 1/2 Toner 44



SHA 44 D 2,5l. + 1/4 Toner 44



SHA 19 A 2,5l. + 2 Toner 19



SHA 19 B 2,5l. + 1 Toner 19



SHA 19 C 2,5l. + 1/2 Toner 19



SHA 19 D 2,5l. + 1/4 Toner 19



SHA 12 A 2,5l. + 2 Toner 12



SHA 12 B 2,5l. + 1 Toner 12



SHA 12 C 2,5l. + 1/2 Toner 12



SHA 12 D 2,5l. + 1/4 Toner 12



SHA 13 A 2,5l. + 2 Toner 13



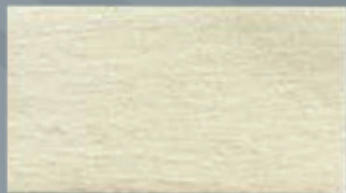
SHA 13 B 2,5l. + 1 Toner 13



SHA 13 C 2,5l. + 1/2 Toner 13



SHA 13 D 2,5l. + 1/4 Toner 13



SHA 14 A 2,5l. + 2 Toner 14



SHA 14 B 2,5l. + 1 Toner 14



SHA 14 C 2,5l. + 1/2 Toner 14



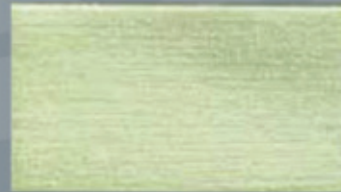
SHA 14 D 2,5l. + 1/4 Toner 14



SHA 25 A 2,5l. + 2 Toner 25



SHA 25 B 2,5l. + 1 Toner 25



SHA 25 C 2,5l. + 1/2 Toner 25



SHA 25 D 2,5l. + 1/4 Toner 25



SHA 15 A 2,5l. + 2 Toner 15



SHA 15 B 2,5l. + 1 Toner 15



SHA 15 C 2,5l. + 1/2 Toner 15



SHA 15 D 2,5l. + 1/4 Toner 15

# DecoLine

SISTEMA DI GESTIONE QUALITÀ CERTIFICATO UNI EN ISO 9001:2008



Made in Italy



G.Farbex sas  
via Besenzone, 7  
29016 Cortemaggiore  
Piacenza - ITALY

phone +39 0523 835361  
fax +39 0523 836879

[www.farbex.it](http://www.farbex.it)  
[info@farbex.it](mailto:info@farbex.it)

